



# 'DELTA'

LED HIGH BAY LIGHTS SERIES

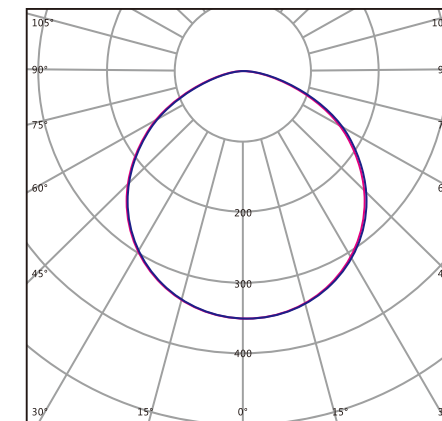
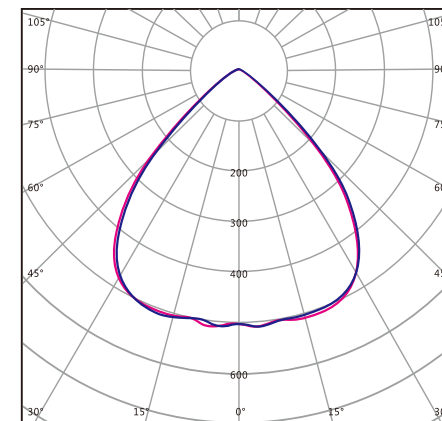
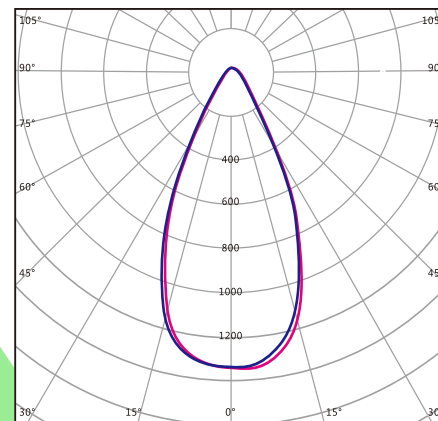
[www.leitech.com.au](http://www.leitech.com.au)

[sales@leitech.com.au](mailto:sales@leitech.com.au)

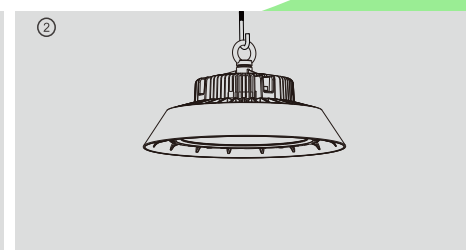
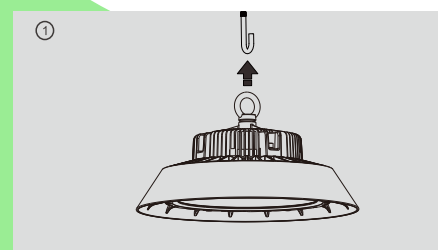
## Leitech - 'DELTA' Series

Part Numbers	D2B100-SD	D2B150-SD	D2B200-SD	D2B240-SD	D2B300-SD
Power	100W	150W	200W	240W	300W
Output	13000lm	19,500lm	26,000lm	31200 lm	39000lm
Efficiency	130lm/W	130lm/W	130lm/W	130lm/W	130lm
CCT	5000k				
CRI	> 80				
Beam Angle	120° [50° optional]				
Nichia LED Chips 1.4W	132 chips	189 chips	252 chips	302 chips	532 chips
Input Voltage	100-227 Vac 47-63hz PF 0.95				
IP Rating	IP65				
Driver	Meanwell HLG				
HID Equivalent	300W	400-600W	700W		

## Illuminance Charts



## Installation



## Accessories



50 degrees lens

120 degree opaque lens

Adjustable  
mounting bracket

Daylight  
Harvesting Sensor

Daylight sensor  
mounting bracket



- High performance SMD design
- Output options up to 300W
- Efficacy up to 130lm/W
- Electrical: 100-277v 180-480v
- LED life projection >80000hrs
- Standard Beam angle 120° (optional 60°)
- Superior uniformity
- Superior temperature stability
- Temperature tested for the toughest conditions
- Quality Meanwell long life driver
- Light weight (6-7kg)
- IK10 Polycarbonate (PC) diffuser
- Operating range -30~+50°C
- Stainless steel screws
- IP65 Protection rating
- Seven years warranty

## Control Options

- Motion sensing
- Daylight Harvesting
- DALI programmable

Certification CE





# DELTA High Bay

*The maximum efficiency, maintenance free High Bay light.*

As LEDs advance, they're enabling the development of smaller, lighter designs with more powerful light output for lower energy input. It's giving more accurate beam angles, better diffusion, and longer life. With the new generation LED high bays the old fashioned shroud isn't always necessary either - the light goes exactly where you want to focus it!

And all this is helping cutting edge players in the food and beverage industries score significant improvements in

- cost reduction
- safety
- productivity
- and ROI.

## About those reductions

It's about more than the electricity! One of the biggest lighting costs to this industry has been maintenance. It's so important it even appears on many HACCP reports. Leitech designs aim at zero-maintenance lighting with increased lighting effectiveness. In a world where rampant costs and rising demand makes the most effective use of electricity an urgent priority, LED lighting lets us use many other strategies that legacy lighting systems were incapable of offering. Leitech are leading providers of lighting efficiency solutions, and we also sell LED lights.

## Work Safety

High quality lighting can prevent workplace accidents by increasing the visibility of moving machinery and other safety hazards. It can also reduce the chance of accidents and injuries from "momentary blindness" - low field vision due to eyes adjusting from brighter to darker surrounds.

## Productivity Results

Better lighting levels and distribution make all work tasks easier. Lighting requirements vary according to tasks, and appropriate lighting levels, without glare or shadows, will clarify detail work and reduce eye fatigue and headaches. As visual clarity improves and eye strain declines, speed and accuracy will rise.

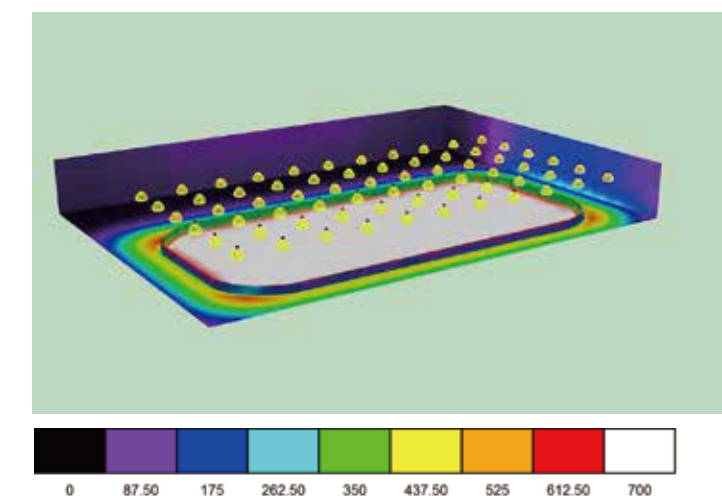
## LED Reliability

Leitech's LEDs have a long maintenance-free life. Consisting of a high quality driver and a body designed for superior thermal management, the Delta LED high bays have a life protection of 100,000 hours and a warranty of 5 years. These LED High Bay lights are made from high specification components including:

- Japanese Nichia LED Chips
- Meanwell LED driver,
- IP65 rated housing,
- IK10 rated Polycarbonate Lens
- Stainless Steel screws, bolts and mounting loop
- Aluminium Alloy Body accurately profiled for rapid heat dissipation.

## Delta Simulation

Rink lighting simulation



HB08-200 H25202

## Superior lighting performance

Outperforms conventional LED high bay designs

Delta	Other LED 150W
	
312 lux working plane	199 lux working plane
0.650 Uniformity	0.394 Uniformity
	

Room width 100m Room length 100m Room height 10m  
Fixture Qty 225pcs Fixture spacing 6.7m