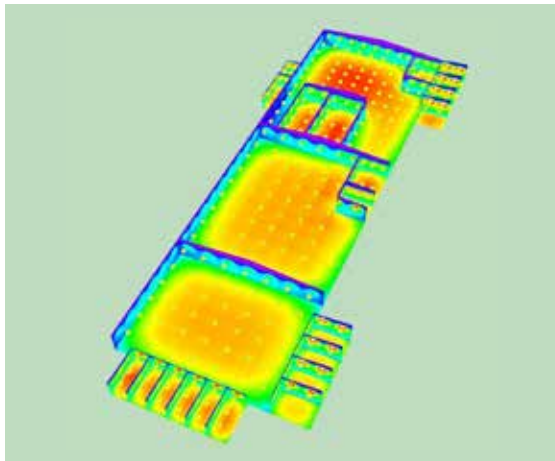


CASE STUDY – NEW CONSTRUCTION

Almondco Renmark



OVERVIEW

Almondco were building a 'state-of-the-art' production facility at their location in Renmark and were concerned to continue this standard of excellence in the lighting installation as well. The project brief was for not only a high level of lighting with performance warranties but also a requirement for a high level of efficiency.

SOLUTION

Leitech worked closely with the Almondco project team and the final selection was to use the Delta Smart!

The Delta Smart not only achieved the lighting design specifications but they operate at a high flux rate of 160 lumens per watt.

The integrated sensor for both daylight and movement detection takes the energy efficiency to the next level. Completely programmable from the ground the lights can be set to suit the tasks in the area, providing ultimate flexibility for the client.

OUTCOME

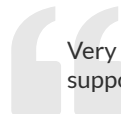
Almondco are very happy with the finished project!

Due to the fire system constraints the lights required bespoke cabling, another facet that Leitech was able to do for the client in helping 'make it happen!'

The lighting package included all interior lighting, external security lighting and exterior roadway poles and lighting fixtures.

TESTIMONIAL

Craig H.
Project Engineer



Very happy with these guys, they worked with us closely and provided support every step of the way in view of a good outcome

IF YOU HAVE A NEW PROJECT COMING UP AND YOU WOULD LIKE US TO DO A COMPLIMENTARY INITIAL LIGHT DESIGN, PLEASE REACHOUT TO SIMON OR KIM